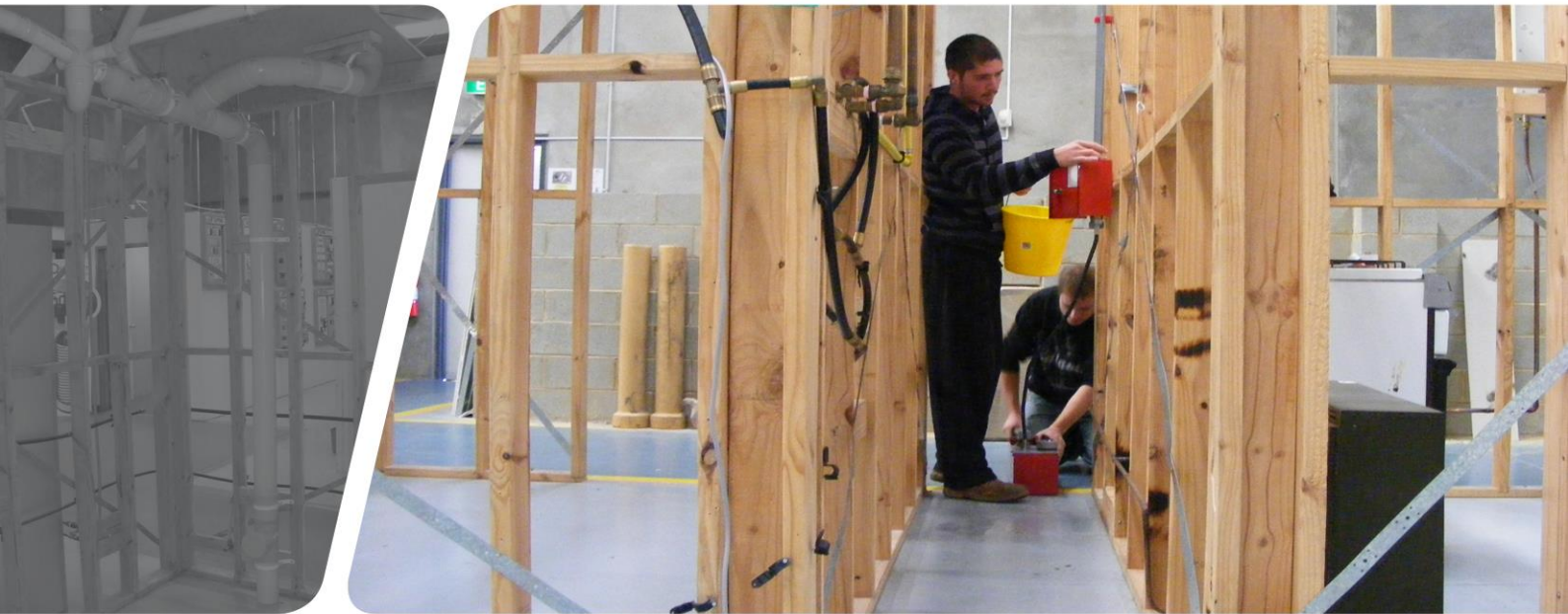


Disconnect & Reconnect Water Heaters



National Restricted Electrical Licence (NREL) for Plumbers

Program Overview

This unit covers disconnecting and reconnecting water heaters connected to low voltage installation wiring. This may be incidental to or a primary and regular function of work related to a principle work function. It encompasses working safely, identifying supply arrangements, following isolation procedures, selecting and using testing and measuring devices, terminating and connecting cables and conductors, safely testing and reporting.

The unit coverage excludes disconnecting or reconnecting circuits at a switchboard or to general electrical accessories (including switches, socket outlets, circuit protective devices etc.); or installation of or alteration to any part of the fixed electrical wiring system (defined as electrical installing work).

Program Content

This program will involve:

- Prepare to disconnect water heaters
- Disconnect water heaters
- Prepare to reconnect water heaters
- Reconnect water heaters
- Test the reconnected water heaters for safe operation
- Identify and report faults
- Provide status report(s)

Program Details

Duration

5 days (1 day per week x 5 weeks)

Time

8:30am – 4.00pm

Venue

29 Enterprise Rd, Elizabeth East

Full Cost

\$800 per person

Statement of Attainment

UEENEEP014A Disconnect-reconnect water heaters connected to low voltage installation wiring

Other Programs

Upon request also available:

- **Appliances:** UEENEEEP010A Disconnect - reconnect appliances connected to low voltage installation wiring
- **Control Devices:** UEENEEP013A Disconnect-reconnect control devices connected to low voltage installation wiring

Pre-Requisites

Must be a qualified Plumber.

Participants who do not hold these pre-requisites will be required to complete these units prior to commencing the course:

- UEENEEE101A Apply Occupational Health and Safety regulations, codes and practices in the workplace (*online or workbook*)
- HLTAID002 Provide basic emergency life support (*in-class*)

For more information or to enrol please contact Training Prospects on (08) 8287 2566 or visit website www.trainingprospects.com.au

Find us on Facebook  facebook.com/trainingprospects



NATIONALLY RECOGNISED
TRAINING

RTO: 40053



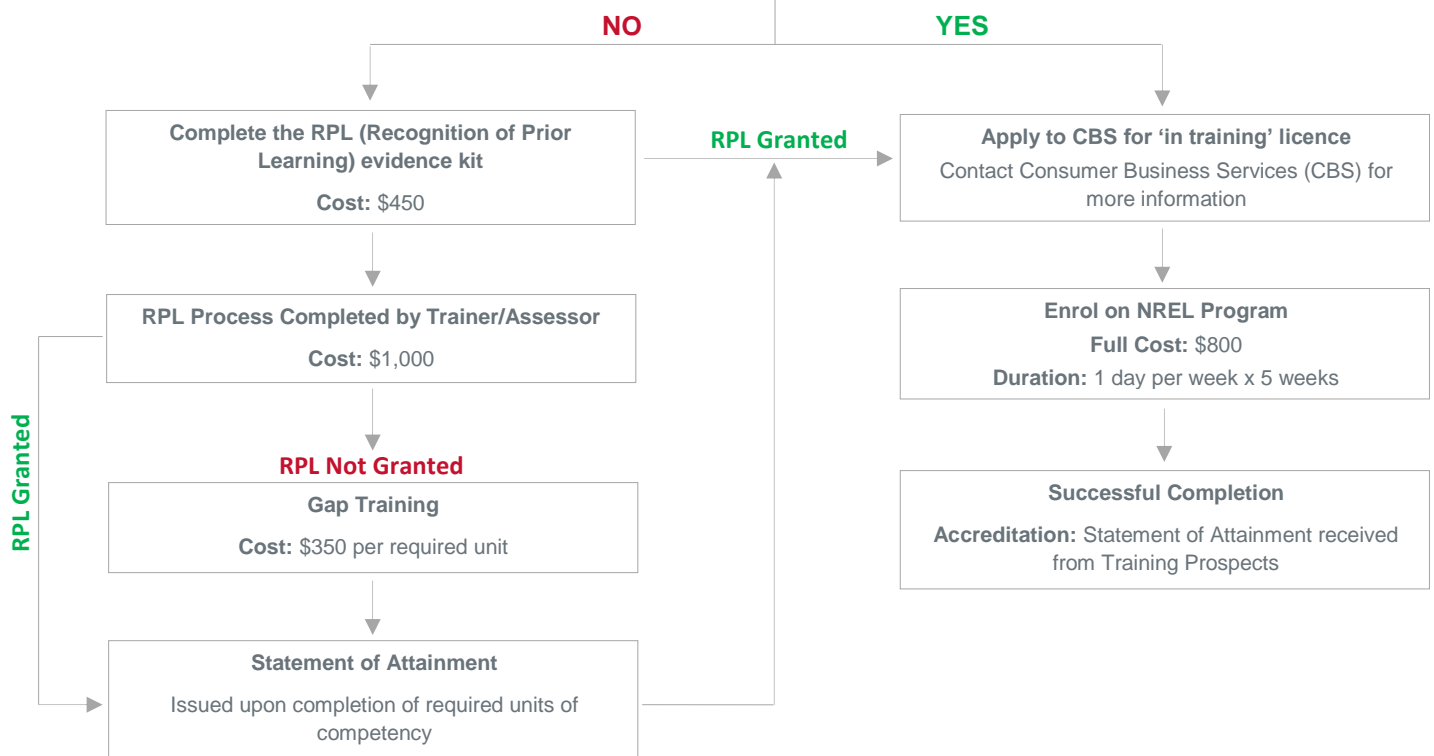
SYCTP-1-337

NREL Eligibility

To be eligible to undertake this course you will be required to provide Training Prospects with evidence of the following, training cannot commence until eligibility requirements have been satisfied.

Do you have either:

<p>A Certificate of Competency in one of the following declared vocations or an Australian Recognised Trade Certificate:</p> <ul style="list-style-type: none"> • Armature Winding • Radio Tradesperson • Office Machine Mechanic • Engineering Tradesperson Mechanical • Engineering Tradesperson Electronic • Scientific Instrument Making • Mechanical Services Plumber • Fitting and/or Turning • Plumbing and/or Gas Fitting • Refrigeration and Air Conditioning Mechanic 	<p>A Statement of Attainment for the following units of competency</p> <ul style="list-style-type: none"> • MEM16007A Work with others in a manufacturing, engineering or related environment • MEM13014A Apply principles of occupational health and safety in the work environment • MEM15024A Apply quality procedures • MEM14004A Plan to undertake a routine task • MEM15002A Apply quality systems • MEM16006A Organise and communicate information • MEM17003A Assist in the provision of on the job training • MEM12023A Perform engineering measurements • MEM14005A Plan a complete activity • MEM12024A Perform computations • MEM16008A Interact with computing technology • MEM16009A Research and analyse engineering information • MEM30012A Apply mathematical techniques in a manufacturing, engineering or related situations • MEM12025A Use graphical techniques and perform simple statistical computations • MEM16012A Interpret specifications and manuals • MEM16011B Communicate with individuals and small groups • MEM16014A Report technical Information • MEM18001C Use hand tools • MEM18002B Use power tools / hand held operations
--	--



RTO: 40053



SYCTP-1-337